

**SKYDIVE - WING SUIT
SIMULATOR**



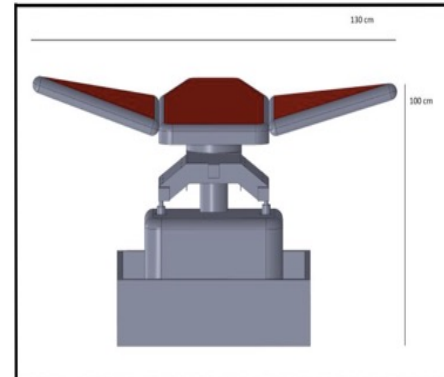
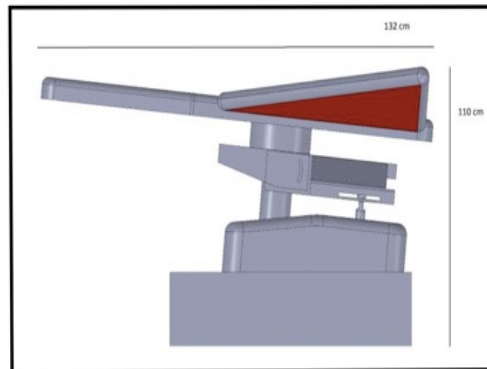


ARC019 VR-01 SKYDIVE SIMULATOR

Have you ever wished to jump from 10 thousand feet high and fly like birds ?

You can live this exciting feeling with ArcSim Sky-diving Simulator.
You can enjoy the beautiful view of the mountains lakes forestsand the nature by puting the Oculus Virtual Reality on.

ArcSim Sky-diving Simulator work with our own ArcSim software and game and gives you the G-force feeling of flying, right turn, left turn and free fall.



TECHNICAL FEATURES

1. Two electrical actuators driven by high quality servo motors.
2. Power: 220 VAC 16A single phase power 2000 Watts.
3. Strong construction basis made of steel profiles.
4. Motion with sensitive positioning.
5. 2DOF Motion system.
6. High capacity and VR compatible PC.
7. Oculus Rift V1 VR Headset.
8. All the nuts and bolts used in the mechanism are made of mildew resistant chrome material.
9. Zero lag (no -delay) between the game itself and motion provided thanks to our special software.
10. Adjustable and customizable settings.
11. Fan which produces a current of fresh air more or less powerful according to the simulated flight speed
12. Bed with high quality viscose (artificial leather) sponge.
13. First class acrylic paint.
14. 2 seat belts.
15. Unlimited game license (work with our own ArcSim software).
16. 3 different game tracks.
17. Operation footprint 3,20x 2,30 meters .
18. Easy installation less than 30 minutes.
19. Operation timer.
20. Can be operated by only one person.
21. For indoor and outdoor use.
22. 2 year guarantee for all the parts.

	<u>Platform Size</u>
<u>Height</u>	1000 mm
<u>Footprint</u>	1300 mm x 2200 mm (with fan)
<u>Weight</u>	140 kg
<u>Linear Axis</u>	Motion, Velocity, Acceleration
<u>X axis</u>	No Motion
<u>Y axis</u>	No Motion
<u>Z axis</u>	No Motion
<u>Angular Axis</u>	
<u>Roll Axis</u>	+18°/-18° 20°/sn 3°/sn ²
<u>Pitch Axis</u>	+17°/-17° 20°/sn 3°/sn ²
<u>Yaw axis</u>	No Motion
<u>Operation Area</u>	2,3mt (width) x 3,2mt (length) = 7,4sqm





